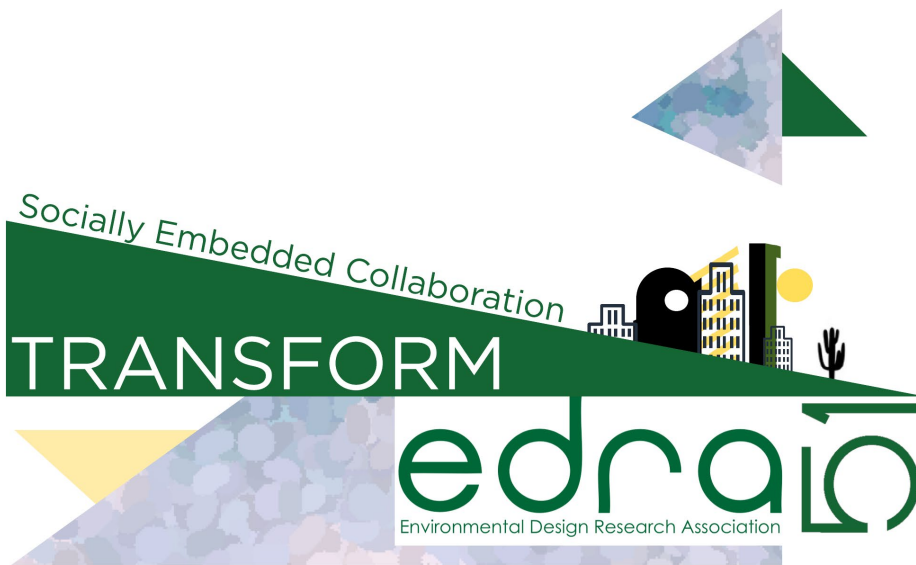


EDRA51

TRANSFORM: SOCIALLY EMBEDDED COLLABORATION CALL FOR PROPOSALS



**51st Annual Conference of the
Environmental Design Research Association
April 4-7, 2020
Tempe, Arizona**

Jointly invited by



October 26, 2019 updated

TRANSFORM: Socially Embedded Collaboration

The Environmental Design Research Association (EDRA) invites practitioners, researchers, and educators to submit their proposals and join the 51st annual conference to collectively rethink how socially embedded, inclusive, and collaborative environmental design may serve as a foundation for transforming society and address the major challenges we are facing in the world.

This call invites proposals from practitioners, researchers, and educators to share their transdisciplinary experiences and approaches in addressing EDRA's critical mission of sustainability, resilience, and social justice. We seek evidence of projects exploring how design and research at all scales can move communities beyond status-quo toward more sustainable and resilient models with adaptive and transformative capacities. The scope encompasses built and natural environments, historical and cultural assets, technology and communication tools, pedagogy and policy decisions, long and short-term responses to the call for a more sustainable, equitable and resilient world for all people, regardless of age, gender, race, ethnicity, and abilities.

EDRA51 will take place in Tempe, Arizona, in the Phoenix Metropolitan Area, where urban development growth continues to be challenged under the fragile ecosystems, scarcity of resources, persistence in environmental and social justice, and increased impacts from climate change. Our challenges are not unique. **EDRA 51 provides the space to brainstorm how environmental design research collaborates with academia, not-for-profit organizations, public sectors, and private sectors to lead the charge in transforming people's relationships with each other, their communities, and their environments toward net positive futures.** We encourage you to join us as we debate, discuss, reflect, and transform our capacity to impact social, environmental, and economic challenges around the world.



Topical Areas | Tracks:

TRANSFORM PROCESSES AND OUTCOMES FOR EQUITY

This track focuses on research and practice examining procedures and/or the outcomes of environmental and social justice/equity. We will highlight the work that brings the voices of those who often are not included in the design decision-making processes of creating built environments. We welcome work deliberately designed to include people of diverse abilities, ethnic and racial groups, and life stages who are often not given a voice in the creation of environments. We further invite proposals that demonstrates the impact and performance outcomes of design and policy-driven efforts for re-distributive justice. We seek work that challenges design processes and outcomes for equity that achieves quality of life for all people.

TRANSFORM PLACES WITH PEOPLE AND THE ENVIRONMENT

This track focuses on the research and integration of human factors considerations, including specific user groups such as children and youth, older people, prisoners, and people with various abilities, into the design of built environment typologies, including but not limited to residential environments, work environments, healing environments, religious environments, recreational and leisure environments, educational environments, urban environments, jails and prisons environments, transportation systems environments, and environments characterized by their historical, cultural, and natural assets. This track includes critical relationships between people and the environment other than equity focus addressed in the first track above.

TRANSFORM DESIGN FOR RESILIENCE & SUSTAINABILITY

This track will examine the research and practices that address the social and ecological drivers of changes in our environment in order to enhance the capacity of those places to be more sustainable and resilient in coping with climate change, uncertainty, and wicked problems in complex systems. We welcome inquiries on how designed space could mitigate climate change impacts, enhance adaptive capacity, meet sustainability outcomes, influence people's perception and behaviors, and serve as agents of positive change.



TRANSFORM EDUCATION FOR OUR COMMON FUTURE

This track will focus on design pedagogy and practices that can enable current and future generations of environmental designers to integrate a diversity of considerations into their future professional practices, including human factors, resilience and sustainable practices, or equity and diversity. Submittals in this area may demonstrate relevant teaching methods, address general challenges of educating students on environment and behavior issues, evaluate transformative learning outcomes, or focus on specific educational program requirements that help to enhance transformative capacity in coping with challenges and meeting the needs in our common sustainable and resilient future.

TRANSFORM IN TRANSITIONS

This track encompasses emerging and innovative research and practices that may not fall into any of the tracks above. We welcome theory-driven, critical thinking, radical approaches, pilot studies and prototypes, integrated systems design and technology, innovative communication not lost in translation, smart and connected data collection and analysis for design transformation, and provocative ideas that contribute to constructive transformation of our built environment.

We recognize that EDRA is home to a broad and diverse range of work and welcome submissions from across all disciplines and professions to represent the full variety of issues addressed by environmental design researchers and practitioners.

EDRA is committed to quality of work presented at the conference. All submissions will undergo stringent selection and review process laid out below. EDRA 51 will publish conference programs and proceedings with all accepted abstracts and full papers with special highlights of award-winning papers and posters.

We look forward to your submission and
to seeing you in Arizona!



KEY DATES

August 12, 2019

- Submission portal opens. Visit EDRA51 webpage on www.edra.org

September 30, 2019

- Due date for all Intensives, Individual and Group Presentation abstracts and full paper submissions

November 11, 2019

- Early Bird registration opens
- Due dates for Mobile Sessions

December 9, 2019

- Due date for Visual Presentation-Poster abstracts & Video Shorts

December 23, 2019

- Due date for Graduate Student Workshop application
- Due date for Individual Presentation Abstracts and Papers revisions (required only for those with the initial decision of Acceptance Pending Revisions)

January 31, 2020

- Regular registration begins/Early Bird registration ends
- Due date for Visual Presentation-Poster Electronic Copy (Only for students participating in the Student Design Award)
- Due date for ALL conference participants and presenters to register for the conference; required to be part of the EDRA51 program

April 4-7, 2020

- EDRA51 Transform Conference in Tempe, Arizona

.....
PLEASE NOTE THAT DUE DATES WILL BE STRICTLY OBSERVED.
Submissions made after the due date will not be considered for review.
.....



SUBMISSION TYPES AND GUIDELINES

Submissions must be made through the EDRA51 online system following the session types described below. Session lengths will be 60-90 minutes unless otherwise noted.

I. INTENSIVE SESSIONS (SATURDAY, APRIL 4)

- Intensives – Full Day (8AM-5PM)
- Intensives – Half Day (8AM-12PM or 1PM-5PM)

II. INDIVIDUAL PRESENTATIONS

- Abstracts
- Full papers

III. GROUP PRESENTATIONS

- Symposia
- Workshops
- Practitioner/Researcher Collaborations

IV. VISUAL PRESENTATIONS

- Display Posters
- Digital Media Shorts

V. MOBILE SESSIONS (MONDAY, APRIL 6)

- In-conference, Full Day (8AM-5PM)
- In-conference, Half Day (8AM-12PM or 1PM-5PM)



I. INTENSIVE SESSIONS ON SATURDAY, APRIL 4, 2020

Intensives are sessions that provide an opportunity for a group to devote a significant amount of time *for in-depth exploration* of a single topic or theme. They can use a variety of formats (e.g. presentation, charrette, working session) to engage varying numbers of attendees.

GUIDELINES

- One summary abstract limited to 300 words detailing the proposed intensive session goals, objectives, and agenda with detailed allocated time schedule
- A minimum of 1 organizer plus 1 presenter up to 5 presenters are required
- Each presenter must provide an abstract limited to 300 words
- The organizer and each presenter's biographies are required limited to 100 words, not included in the word limit of the abstract
- Four learning objectives are required
- Submission must indicate whether proposed for **full** or a **half-day** session

II. INDIVIDUAL PRESENTATIONS

Individual presentations should focus on original scholarly or professional research that has not been published or presented elsewhere. All individual presentation abstracts and full papers will undergo blind peer-review process in two stages. The first stage will have three decisions: Accepted, Accepted Pending Revisions, Reject. Submissions with the initial decision of Accepted Pending Revisions must resubmit their Abstracts and Papers per reviewers' comments and upload by the due date for being fully considered as acceptance.

REQUIREMENTS FOR ABSTRACT SUBMISSION

- Abstracts shall not exceed 300 words
- Three to five keywords
- Four learning objectives
- Up to three bibliographical references are encouraged, not required; their citations must be fully incorporated into the abstract
- All references should be provided and formatted according to APA (American Psychological Association) guidelines
- Attachments are not acceptable
- Blind review requires authors *not to include* their names or other identifying information in the uploaded abstract or document



GUIDELINES FOR FULL PAPER SUBMISSION

- Please follow the EDRA51 full paper template (a digital copy is available for downloading from the submission website)
- Must not exceed 20 single-spaced pages, including tables, images, and references
- All images, references and citations must be fully incorporated into one document
- All references should be provided and formatted according to APA (American Psychological Association) guidelines
- Attachments to emails are not acceptable
- Digital files must use MS Word or compatible formats (.doc, .docx, .rtf) (fonts and style please follow the template)
- Blind review requires authors **not to include** names or any other identifying information in the uploaded abstracts/proposals subject to peer review

.....

Papers that do not follow the above requirements will be automatically disqualified for review. **All submitted full papers will have the chance to enter review pool for EDRA Best Papers Award and Best Student Papers Award.** Authors who are students are required to identify themselves in the submission form.

.....

III. GROUP PRESENTATIONS

SYMPOSIA

A *Symposia* submission organizes a group of three to five presenters, including one facilitator, on a theme as a forum for emerging conceptual and methodological issues or a critical discussion of exploratory research and work in progress. The discussion moderator must be able to assure a professional level of discourse. Sessions should include time for audience questions and comments.

GUIDELINES

- One summary abstract limited to 300 words detailing the proposed workshop goals, objectives, and agenda
- A minimum of 1 organizer plus 2 presenters up to 4 presenters are required
- Each presenter must provide an abstract limited to 300 words
- Submitter is responsible to package the summary abstract and each presenter's abstract into one document for submission



-
- The organizer and each presenter's biographies are required and limited to 100 words, not included in the word limit of the abstract
 - Four learning objectives are required

WORKSHOPS

A *workshop* submission may be designed to collaboratively explore a particular research or practice construct; or discuss a particular advanced design, method or practice concept. Workshops should be considered as interactive sessions and therefore should limit time spent in formal presentations and encourage interaction and discussion among organizers and audience.

GUIDELINES

- One summary abstract limited to 500 words detailing the proposed workshop goals, objectives, and agenda
- A minimum of 1 organizer plus 1 presenter up to 4 presenters are required
- The organizer and each presenter's biographies are required and limited to 100 words, not included in the word limit of the abstract
- Four learning objectives are required

PRACTITIONER/RESEARCHER COLLABORATIONS

The *practitioner/researcher collaborations* group session meant to encourage and provide a forum in which collaborative, cross disciplinary teams can describe the integration of research and design or planning practice on specific projects. Teams can also profile a project of the built or natural environment where research has been used to inform adaptive management practices or policies. Collaborative presentation by both a researcher and practitioner (or a team where they are represented) which describes the place, project, research methods and outcomes is essential to this session category.

GUIDELINES

- One summary abstract limited to 500 words detailing the proposed session goals, objectives, methods and outcomes of the collaboration
- A minimum of 1 organizer plus 1 presenter up to 4 presenters are required and at least 1 researcher and 1 practitioner are required in this session
- The organizer and each presenter's biographies are required limited to 100 words, not included in the word limit of the abstract
- Four learning objectives are required



IV. VISUAL PRESENTATIONS

DISPLAY POSTERS

Display Posters provide an opportunity for open discussion between the authors and an interested audience. Authors are invited to stand by their display and interact with other conference attendees. The display should represent in-progress or finished research that lends itself to visual presentation, and/or research-informed design projects. Among other types of research, posters sessions are an appropriate outlet for professional or student studio-based design work, experimental or empirical proto types, policy studies, or visual research.

GUIDELINES

- The presenter must provide an abstract limited to 300 words detailing the topic and methodology
- References up to three are encouraged and their citations must be fully incorporated into the abstract
- All references should be provided and formatted according to APA (American Psychological Association) guidelines
- Abstracts may also contain visual material, a mock up, or draft of the poster but must be submitted in pdf format

After your abstract is accepted, please follow the guidelines below:

- Digital submission is required upon acceptance following one of the two acceptable sizes below:
 - 24" x 36" landscape orientation, or
 - 36" x 40" portrait orientation
- Authors are expected to bring a hard copy of pre-printed poster for exhibition and standing by the posters for presentation at the conference
- Further exhibition instructions will be given upon acceptance

DIGITAL MEDIA SHORTS

Digital Media Shorts are a kind of multimedia poster. They are intended as a means to offer a brief digital presentation in an engaging, abbreviated way. It can include video, audio, slides and animation and should be limited to 6 minutes of total presentation time. Submissions are intended to impart a story about research or practical research application through image, moving image, with or without sound.



Digital Media Shorts will be on display during the conference. They may involve a continuous loop in a media hall and/or be posted to an online gallery. Similar to the Display Posters process, accepted authors are invited to stand near their display and interact with conference attendees during a scheduled session.

GUIDELINES

- One summary abstract limited to 300 words detailing the topic and research design respond to a particular conference topic area
- Submission can also include a graphic element that contains samples from the digital media to support the proposed idea in a PDF file format
- Accepted digital short should be limited to a 6-minute maximum for visually oriented presentation; please identify the proposed digital media (slides, video, animation, etc.) in the abstract
- The digital upload will not be required until after acceptance

V. MOBILE SESSIONS ON MONDAY, APRIL 6, 2020

Mobile sessions are in-situ EDRA sessions in which the group travels to and interacts with a site of interest. We encourage local practitioners and researchers to organize mobile sessions to showcase work relevant to conference topic areas. Individuals who are interested in and capable of leading and facilitating a unique educational experience at a particular site proposes a Mobile Session are strongly encouraged to apply. Local site tour guides may be employed as appropriate.

GUIDELINES

- One summary abstract limited to 300 words detailing the proposed tour goals, objectives, and specific sites and schedule itinerary
- The organizer and each presenter's biographies are required limited to 100 words, not included in the word limit of the abstract
- Four learning objectives are required
- Submissions in this category must also include an estimate of proposed expenses (Please note that the execution of the Mobile Sessions will depend on the number of participants signed up and budget. EDRA does not have additional allowance for Mobile Sessions. We encourage proposals to include potential source of funding or sponsorship.)
- Submission must indicate whether proposed for **full** or a **half-day** session



GENERAL SUBMISSION GUIDELINES

Submissions **MUST** follow the guidelines and meet the requirements listed above for each submission type in order to be considered for review.

SUBMISSIONS PORTAL: All submissions must be made ONLINE at EDRA51 webpage. See the Key Dates for all submission due dates.

MAXIMUM SUBMISSIONS: Individuals may only participate in a maximum of three (3) proposal submissions across ALL submission types. Any submissions of authors/presenters over the allowable maximum number of three submissions will not be accepted.

DUPLICATE SUBMISSIONS: EDRA discourages duplicate submissions. If you submit a proposal for one category (such as part of a Symposia), **DO NOT** submit the same abstract for another category (such as a poster).

PUBLICATION PERMISSION: Submission implies author(s) permission for EDRA to publish the paper or abstract in our proceedings. The author(s) must affirm the paper is not under consideration for publication elsewhere and has not been previously published or presented elsewhere.

LIABILITY: The submitting author is responsible for ensuring that the article's publication has been approved by all other co-authors and takes responsibility for the paper during submission and peer review. EDRA will not be held legally responsible should there be any claims for compensation.

CONTINUING EDUCATION CREDIT CONSIDERATION REQUIREMENTS: Submitters are required to provide four learning objectives for the session to support possible use of the session for providing Continuing Education Unit (CEU) certification by various professional organizations. The final selection of presentations offering continuing education credits will be made by the EDRA51 Conference Committee and communicated to the authors prior to the conference. Additional information on CEU will be available at EDRA51 webpage.

CONFERENCE REGISTRATION: All accepted presenters of conference material must register by the registration due date to ensure their sessions will be included in the program. See the Key Dates for the due dates.



SELECTION AND REVIEW PROCESS

Individual Presentations (Abstract and Full Paper), Symposia, and Visual Presentations (Posters and Media Shorts) will undergo the double-blind peer review process. Other types of submissions will be reviewed and accepted based on recommendation from the reviewing board and upon discretion by the EDRA 51 Program Committee and Conference Committee.

GRADUATE STUDENT MENTORING WORKSHOP

ON SATURDAY, APRIL 4, 2020

The Graduate Student Mentoring Workshop is designed to provide a forum for graduate students to present and discuss their ongoing research with senior mentors in environment-behavior design research. The purpose of the workshop is to strengthen and further thesis/dissertation work, as well to support the development of networks for young researchers, both with senior researchers and with other graduate students.

Graduate students who submit work to EDRA and are enrolled in Masters' or Doctoral programs in the Environmental Design and affiliated fields who submit work to EDRA are eligible to participate in the Graduate Student Mentoring Workshop by selecting an option on the submission portal.

Accepted presenters who elect to participate in this mentoring workshop will be contacted for further submission of an expanded research summary outlining their theoretical framing, stage in the research process, and any specific questions to be addressed prior to the workshop. For more information, please visit EDRA51 webpage and follow our social media.



AWARDS & SCHOLARSHIPS

Individual presentation abstracts, full papers, or posters submissions may be considered for the following awards. Please visit EDRA51 webpage and follow our social media for more information.

BEST PAPER/POSTER AWARD

During the double-blind review process, reviewers have the opportunity to identify those proposals to be considered for the EDRA51 Best Paper/Poster Awards based on the quality of research, writing, and the overall alignment of the proposal to EDRA's mission. Based on the recommendations of the peer reviewers, the EDRA Board selects the winning Best Papers/Posters.

NANA KIRK STUDENT SCHOLARSHIPS

Every year, EDRA makes a limited number of scholarships available in the form of reduced or complimentary conference registration and/or travel reimbursement for current EDRA student members. These scholarships are named after Nana Kirk, a long-time EDRA member whose passion about people-centered environmental design and research embodied EDRA's missions and values. Applicants should note that an active EDRA membership at the time of the application is a prerequisite for being considered for EDRA scholarships.

STUDENT AWARDS

- Awards will be announced at the EDRA51 conference
- All student award finalists merit recognition in EDRA publications
- First Prize: A \$500 travel reimbursement voucher to attend EDRA52, complimentary conference registration for EDRA 52, and a one-year EDRA student membership
- Second prize: A one-year EDRA student membership

STUDENT PAPER AWARD

Papers submitted by student authors are eligible for the Student Paper Award, but must adhere to specific guidelines.

STUDENT DESIGN POSTER AWARD

Poster submissions are eligible to be considered for the Student Design Award, which recognizes environmental design efforts that successfully integrate research findings and user input into built environment that improve human health and wellbeing.



OTHER EDRA RECOGNITIONS

EDRA presents many awards at the annual conference which recognize outstanding work in environmental design research and practice. These include awards for Career, Service, Achievement, and Organization, **Great Places Awards**, EDRA **Certificate of Research Excellence (CORE)**, and The **Michael Brill Urban Communication & Design Behavior Research Grant**. Please visit www.edra.org and look for the recognitions tab to learn more about our Award and Certificates, and follow our social media for more information.

We look forward to seeing you at EDRA 51 in Tempe, Arizona, in beautiful April, 2020!

**EDRA 51 TEAM @ THE DESIGN SCHOOL
ARIZONA STATE UNIVERSITY**



EDRA51 PROGRAM COMMITTEE CHAIR

Chingwen Cheng, PhD, Assistant Professor, Landscape Architecture

EDRA51 CONFERENCE COMMITTEE CO-CHAIRS

Milagros Zingoni, Assistant Professor, Interior Design and Interior Architecture

Olivier Vallerand, PhD, Assistant Professor, Interior Design and Interior Architecture

Mauricio Mejia, PhD, Assistant Professor, Visual Communication Design

Magnus Feil, Assistant Professor, Industrial Design

Brie Smith, Lecturer, Interior Design and Interior Architecture

T E M P E
A R I Z O N A
A P R I L 4-7
2 0 2 0

Socially Embedded Collaboration

TRANSFORM

edraio
Environmental Design Research Association



FOLLOW OUR SOCIAL MEDIA!



@edra_environments
www.edra.org
#EDRA51